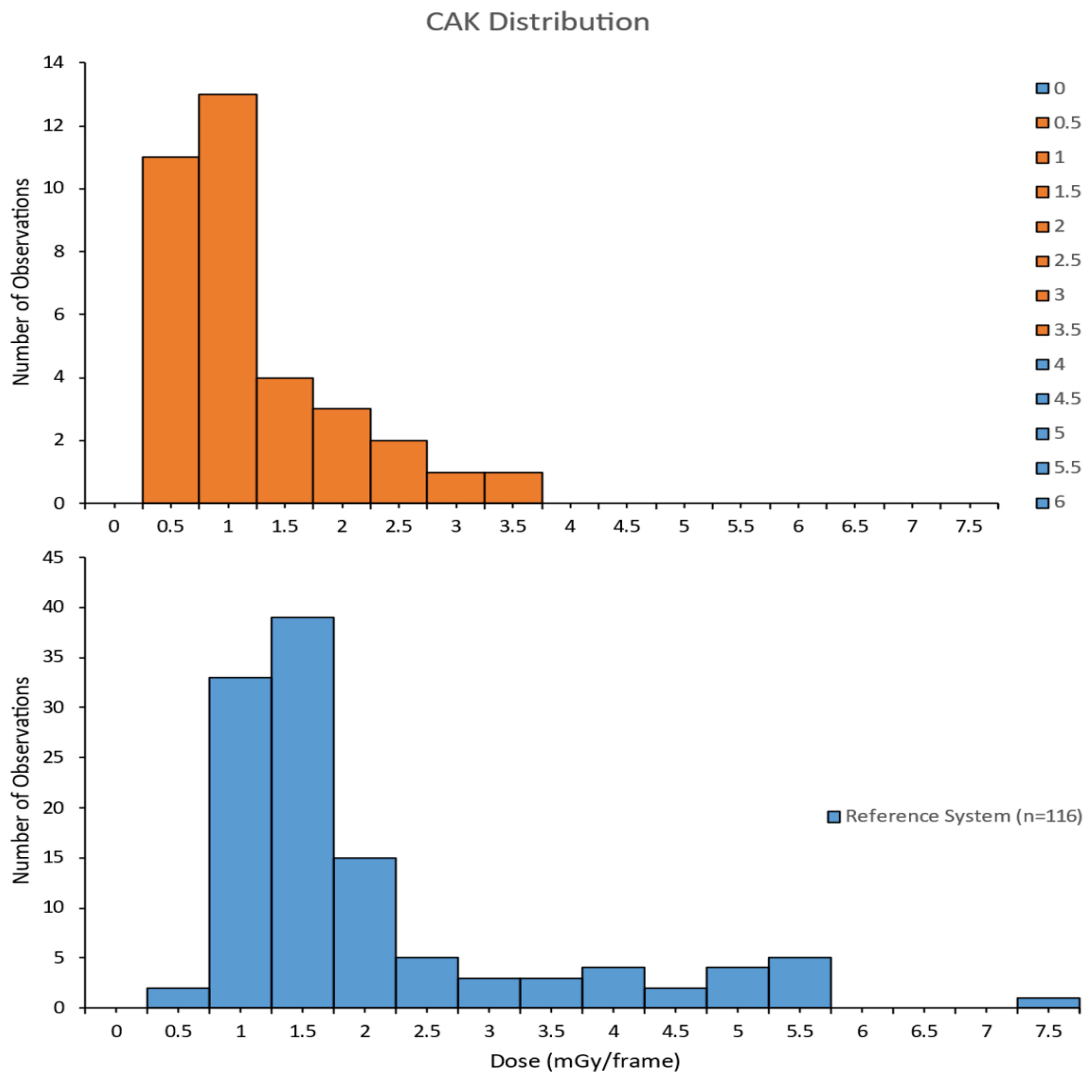
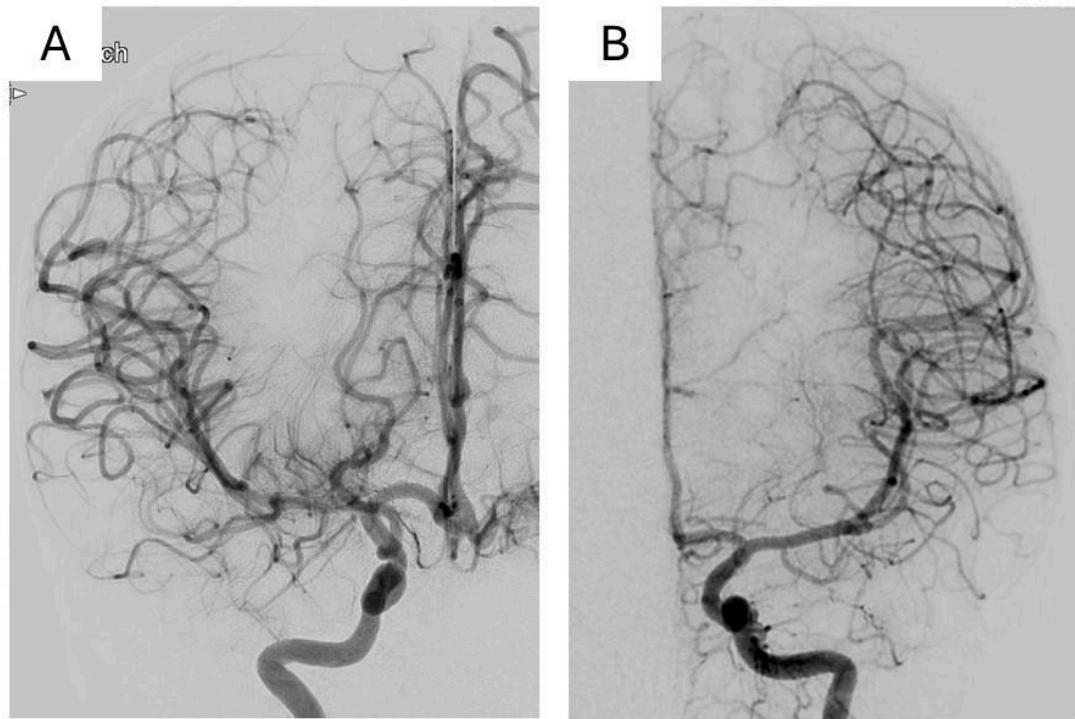


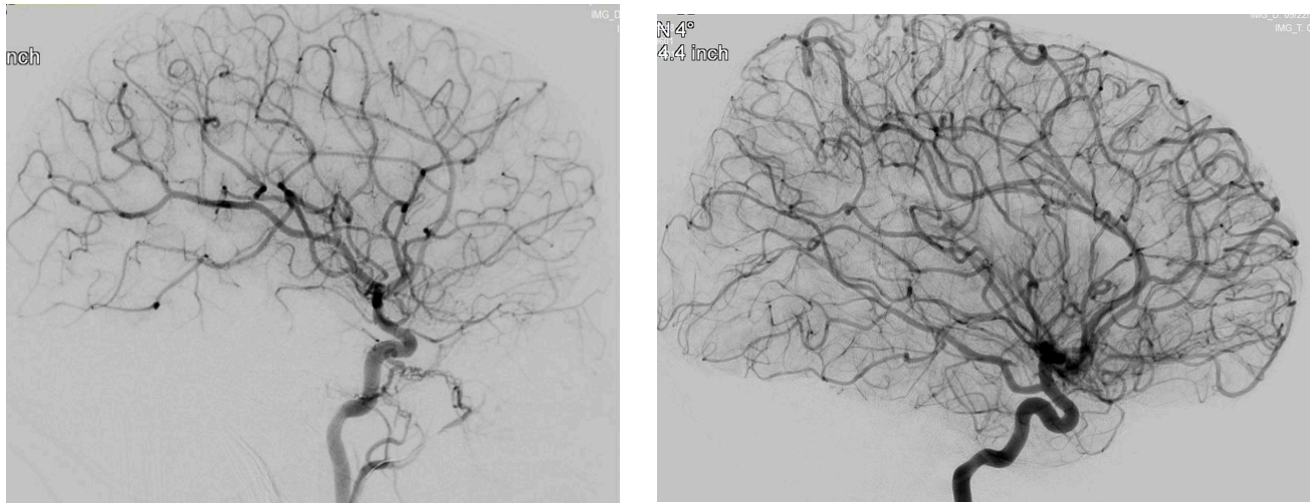
**Figure 1** Distribution of DAP values for diagnostic procedures. DAP was significantly lower for the current system (AlluraClarity) compared to the reference system (Allura XPER); individual values of DAP demonstrated high variability.



**Figure 2** Distribution of CAK values for diagnostic procedures. CAK was significantly lower for the current system (AlluraClarity) compared to the reference system (AlluraXPER); individual values of CAK demonstrated high variability.



**Figure 3** Representative age matched cerebral digital subtracted AP images on coronal view illustrating acquisition using the current system (A, AlluraClarity) compared to the reference system (B, AlluraXPER).



**Figure 4** Representative age matched cerebral digital subtracted AP images on sagittal view illustrating acquisition using the current system (A, AlluraClarity) compared to the reference system (B, AlluraXPER).